



Role description

Role Details

Job ad reference	GC557908
Role title	Environmental Health Officer - Senior
Status	Permanent full time Please note, future vacancies of a temporary, full time and part time nature may also be filled through this recruitment process Please note, suitable part time or job share arrangements may be accommodated within this role
Location	Carrara Note that this position may be required to work throughout the Gold Coast Hospital and Health Service and that the positions primary work location may change based on operational requirements.
Unit/Branch	Environmental Health Public Health
Division	Nursing, Midwifery and Patient Experience Gold Coast Hospital and Health Service
Closing date	Friday, 3 May 2024 Applications will remain current for 12 months
Classification	HP4
Evaluation ID	V1998
Salary	\$124 435 - \$133 901 per annum
Contact name	Sheryl Hurst
Contact number	(07) 5667 3200
Online Applications	www.smartjobs.qld.gov.au

Purpose of the Role

To deliver high level environmental health services as part of the broader public health program to protect, promote and prevent risks to individuals and the community arising from environmental health hazards that impact on the natural and built environmental and human health. Monitor, promote and enforce compliance with public health legislation and undertake health risk.

Our Values

Gold Coast Hospital and Health Service is committed to its six guiding principles which are at the core of all positions and articulate the behaviours that are required when working within the Health Service:



Whilst we implement our strategic objectives to be recognised as a centre of excellence for world class health care, our [values](#) provide the framework to focus our individual behaviours and performance outcomes.

Health Equity and Racism

Gold Coast Health is committed to improved health equity for Aboriginal and Torres Strait Islander peoples in our community as presented in our [Reconciliation Statement](#). It is expected that all Gold Coast Health staff as a valuable member of the Gold Coast Health workforce, contribute to the health equity agenda. Please visit our [website](#) for additional information.

Diversity and Inclusion

[Diversity](#) is at the heart of Gold Coast Health and is critical to a work environment that is equitable and inclusive. A broad range of perspectives, backgrounds and ideas makes us stronger and is essential to delivering high quality health care. Everyone has a role to play in making GCH a place where we all '*Always Belong*'. [Contact Diversity and Inclusion](#)

Organisational Alignment

Gold Coast Health has a [Core Capability Framework](#) (CCF) with five core capability groups; Personal Attributes; Building Relationships, Results Focused, Business Enablers, Leadership and People Management. Under each of the five capability groups, individual capabilities are identified which are essential to drive performance excellence across our workforce. Below outlines the five core role capabilities required to deliver against the key duties and accountabilities of this role. Capabilities are aligned to Leader Profiles; Leading Self, Leading Others, Leading Leaders and Leading Executives. The Leader Profile and Core Capabilities for this role are detailed below.

Leader Level: Leading Others

Core Role Capabilities

Personal Attributes	Individual behaviours influenced by our values and ethical compass	Leading Others Act With Integrity - Role model ethical and professional behaviour, working within the boundaries of level and delegation, acknowledging mistakes and reporting unethical behaviour
Build Relationships	Shape and maximise relationships with colleagues, patients and the community	Leading Others Work Collaboratively - Foster collaborative teamwork, sharing feedback and positive progress, while rewarding collaborative, cooperative behaviour in others
Results Focused	Drive and influence successful organisational outcomes	Leading Others Deliver Results - Identify and engage key contributors to deliver against results while sharing knowledge and skills to develop the team and support in delivering results
Business Enablers	Boost effective service delivery and champion change management	Leading Others Optimise Resources - Develop plans which guide the work of the team, aligning to organisational objectives and allocating the correct resources to tasks
Leadership and People Management	Inspire, engage and build our workforce	Leading Others Manage Through our Values - Model high standards of professionalism and impartiality, encouraging and leading others to do the same

About the Profession/Service

Allied Health Professionals within Gold Coast Health have access to an additional Professional Capability Framework for Allied Health which complements the organisation-wide Core Capability Framework. The Professional Capability Framework details the professional capabilities for Allied Health positions, providing a common language and set of expectations across the professions, and acting as a developmental tool to support and inform discussions about professional skill development and career progression within Gold Coast Health. Further information can be found [online](#).

The Gold Coast Public Health Unit aligns with the Nursing, Midwifery and Patient Experience Directorate in the Gold Coast Hospital and Health Service. The Public Health Unit aims to protect, prevent and promote the health and wellbeing of the community through the provision of:

- A specialist communicable disease epidemiology, surveillance, disease prevention and control service.
- A specialist environmental health service, which includes monitoring, enforcing and promoting compliance with public health legislation on behalf of the Department of Health.
- Responding to public health incidents and major events.
- Health promotion programs.
- Health risk assessment and research.
- Immunisation clinics, research and promotion.

Key Duties and Accountabilities

Fulfill the responsibilities of this role in accordance with Queensland Public Service, the Gold Coast Hospital and Health Service (GCHHS) values.

- Comply with the [Code of Conduct for the Queensland Public Service](#) and all policies and procedures.
- Comply with the [National Safety and Quality Health Service Standards](#) and the Gold Coast Health [Clinical Governance Framework](#) in all areas of your practice.
- Develop, implement and evaluate environmental health projects, research, quality improvement and compliance programs and undertake health risk assessments throughout the entire geographical area of the Gold Coast Hospital and Health Service (GCHHS).
- Deliver environmental health services that are complex and varied in nature, and to identify and integrate evidence-based options into practice, across the entire GCHHS geographical area.
- Exercise independent judgement, high level problem solving and evidentiary skills to monitor, enforce and undertake complex investigations of public health legislation and recommend and implement appropriate interventions and enforcement options across the entire GCHHS area.
- Undertake health risk assessments, research, plan, implement and/or oversee the implementation of environmental health projects and compliance programs.
- High level participation in a multi-disciplinary team responding to public health incidents and disasters, and communicable disease outbreaks.
- Provide high level environmental health advice to internal and external stakeholders and prepare comprehensive reports and submissions on complex environmental health issues.
- Work collaboratively with other public health practitioners and a range of partners for the effective implementation of environmental health programs and broader public health initiatives based on an understanding of community and organisational contexts.
- Support continuous improvement and quality of local service delivery through influence and contribution to the development of operational policy, procedures, guidelines and work instructions, and participate in quality and service improvement activities and business planning.
- Provide professional mentorship, guidance and clinical practice supervision to less experienced environmental health staff, support staff and work experience students and coordinate and/or train environmental health practitioners, to ensure the maintenance of professional standards.
- Contribute to continual learning and development of environmental health practice knowledge and expertise through active learning within a team and by engaging in ongoing, relevant professional development and training activities and research.
- The position requires the incumbent to operate a government vehicle and to travel throughout the GCHHS region to undertake their delegated functions. At times the position may also need to travel outside the region.

- Employees appointed to GCHHS are considered custodians of patient safety and are accountable for practicing patient advocacy in line with GCHHS' always care philosophy and commitment to person-centred care.
- Follow policies, procedures and instructions relating to work health and safety that are relevant to the work being undertaken to ensure high quality and safe services in the workplace.
- Take reasonable care for your own health, safety and wellbeing and take reasonable care to ensure that your acts or omissions do not adversely affect the health, safety and wellbeing of others.
- Employees who are appointed to the GCHHS are accountable for information security, management and appropriate use, in accordance with legislation, standards, policies and procedures.
- Comply with reasonable instructions that are provided for the safety of you and others at the workplace.
- As far as reasonable practicable ensure you eliminate risk to the health and safety of your workers by providing a safe work environment and appropriate safe equipment. Ensure you report and investigate any work related incidents within your area of control.
- Provide training, instruction and equipment necessary for others to undertake their role safely, and ensure workers understand their responsibilities under the WHS policy, procedures and instructions. Monitor the health and wellness of your workers to ensure they are not being adversely affected by conducting their work.
- Ensure safe work practices, procedures and controls are in place that are specific to the hazards in your area of control that either meet or exceed requirements set out in the work health and safety legislation and relevant codes of practice.

Mandatory Qualifications / Professional Registration / Other Requirements

- The possession of a tertiary degree (or equivalent) qualification from a recognised tertiary institution that is accredited by Environmental Health Australia or deemed eligible for appointment by the Queensland Health Environmental Health Officer Appointments Review Committee is a requirement for this role.
- This position requires the incumbent to operate a government vehicle and an appropriate Licence endorsement to operate this type of vehicle is required.
- It is a condition of employment for this role for the employee to be, and remain, vaccinated against the following vaccine preventable diseases during their employment ([Health Employment Directive No. 01/16](#)):
 - measles, mumps, rubella (MMR)
 - varicella (chicken pox)
 - pertussis (whooping cough)
 - hepatitis B
- It is a condition of employment in this role for new employees to GCHHS to undertake a tuberculosis screening, to identify if the tuberculosis vaccination may be required in accordance with the Queensland Health Protocol.
- After hours work and participation in on-call arrangements are a requirement of the position.
- This position is required to work throughout the Gold Coast Hospital and Health Service.

How You Will Be Assessed

You will be assessed on your ability to demonstrate the following key capabilities, knowledge and experience. Within the context of the responsibilities described above under '**Key Duties and Accountabilities**', the ideal applicant will be someone who can demonstrate the following:

- High level knowledge, skills and experience in delivering complex environmental health services.
- Demonstrated ability to undertake public health risk assessments and complex environmental health investigations at a consistently high standard.
- Demonstrated ability to effectively manage workloads to fulfil work requirements and commitments within agreed timeframes.
- Demonstrated ability to provide high level environmental health advice and support to managers, other public health practitioners, partners and other stakeholders.
- High level written and interpersonal communication and negotiation skills, particularly in relation to the resolution of complex issues.

- Demonstrated ability to be an effective team member.
- Demonstrated ability to enact the specified core role capabilities outlined within this role description within your practice.

How to Apply

Please submit the following for the panel to assess your suitability:

- Your **resume**, including a comprehensive employment history, the qualifications you hold and the contact details for at least two referees (Referees should have a thorough knowledge of your capabilities, work performance and conduct within the previous two years).
- A **cover letter** (no more than 2 pages) on how your experience, abilities, knowledge and personal qualities are relevant for the role, addressing the key responsibilities and attributes noted in the “How you will be assessed” section above.

Submit your application via www.smartjobs.qld.gov.au

Only those persons eligible to work in Australia may be employed by Queensland Health. Prospective employees are required to provide proof of identity and documentary evidence of their [right to work in Australia](#).

Hand delivered applications will not be accepted.

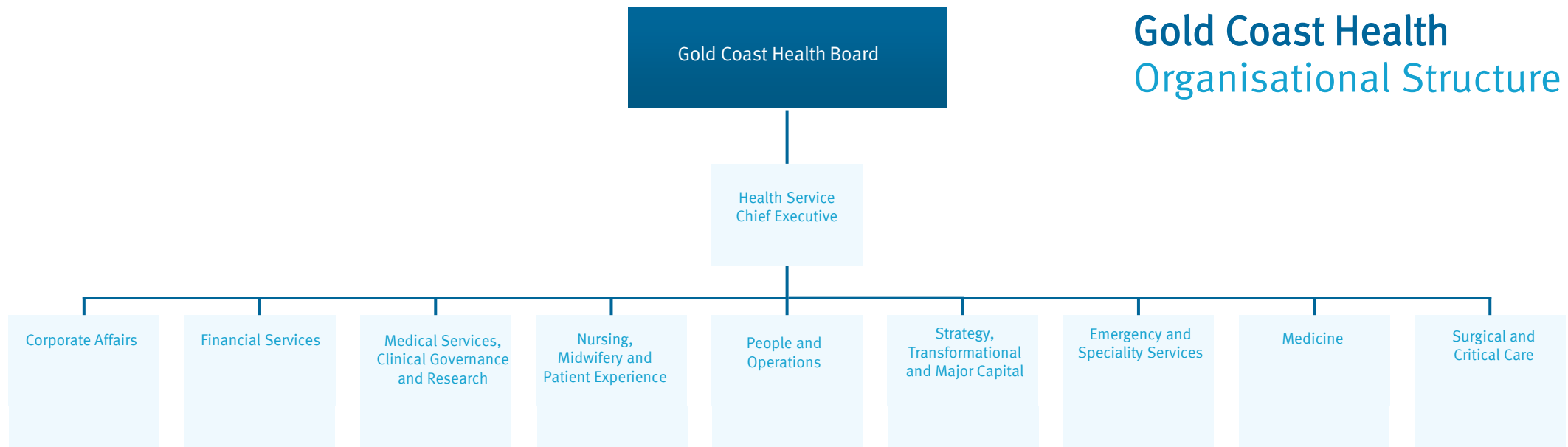
Late applications cannot be submitted online. For a late application to be considered, please contact Recruitment on Recruitment_GoldCoast@health.qld.gov.au.

Further Information

For further information about this opportunity and the benefits and conditions of [working at Gold Coast Health](#) please refer to the Information for Applicants document attached with this Smart Jobs advertised vacancy.

A 6 month probation period may apply to this appointment.

Gold Coast Health Organisational Structure



Our philosophy

Always Care.

Our vision

We will have the best health outcomes in Australia.

Our purpose

To be a leader in compassionate, sustainable, highly-reliable healthcare.

Our values



Integrity	To be open and accountable to the people we serve
Community first	To have the patient's and the community's best interests at heart
Excellence	To strive for outstanding performance and outcomes
Respect	To listen, value and acknowledge each other
Compassion	To treat others with understanding and sensitivity
Empower	To take ownership and enable each other to achieve more



Prepared by: Human Resource
Services Version 13, 01 August 2021